

# GHH RAND®

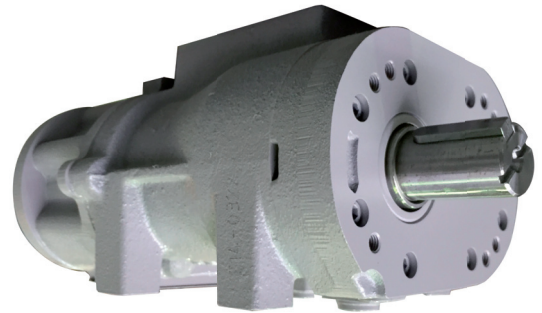
## CE55RW – Oil-Injected Screw Compressor Airend

The CE55RW is a single stage oil-injected screw compressor airend for belt drive and direct drive systems, which can be used for general industrial applications.

### Operating Range

Parameters	Units	Min	Max
Power	kW / hp	2 / 2.6	22* / 29*
Discharge Pressure, abs.	bar / psi	6 / 87	14.5 / 210
Volume Flow	m <sup>3</sup> /min / cfm	0.35/12.5	2.5*/89*

Medium: Air, Inlet temp. 20°C/68°F, Discharge temp. 80°C/176°F, Inlet pressure 1 bar(a)/14.5 psi(a), RH: 60%; \*@12.5 bar(a)



### Technical Data

Parameters	Units	Data
Length	mm	296
Width	mm	182
Height	mm	135
Weight	kg	21.5
Inlet DN	mm	70
Outlet DN	mm	G1¼

### GHH RAND recommends:



- Maximize life and efficiency with Primecool or Primecool Plus (food grade)
- Ask your sales rep. for details

**Ingersoll-Rand Trading GmbH**  
Max-Planck-Ring 27 • 46049 Oberhausen • Germany  
Phone +49 (0) 208 9994-0 • Fax +49 (0) 208 9994-111  
industrial-sales@ghhrand.com • www.ghhrand.com